

S.E. 1/4  
SECTION 26, T.6N., R.2W., S.L.B. & M.

IN WEST HAVEN CITY

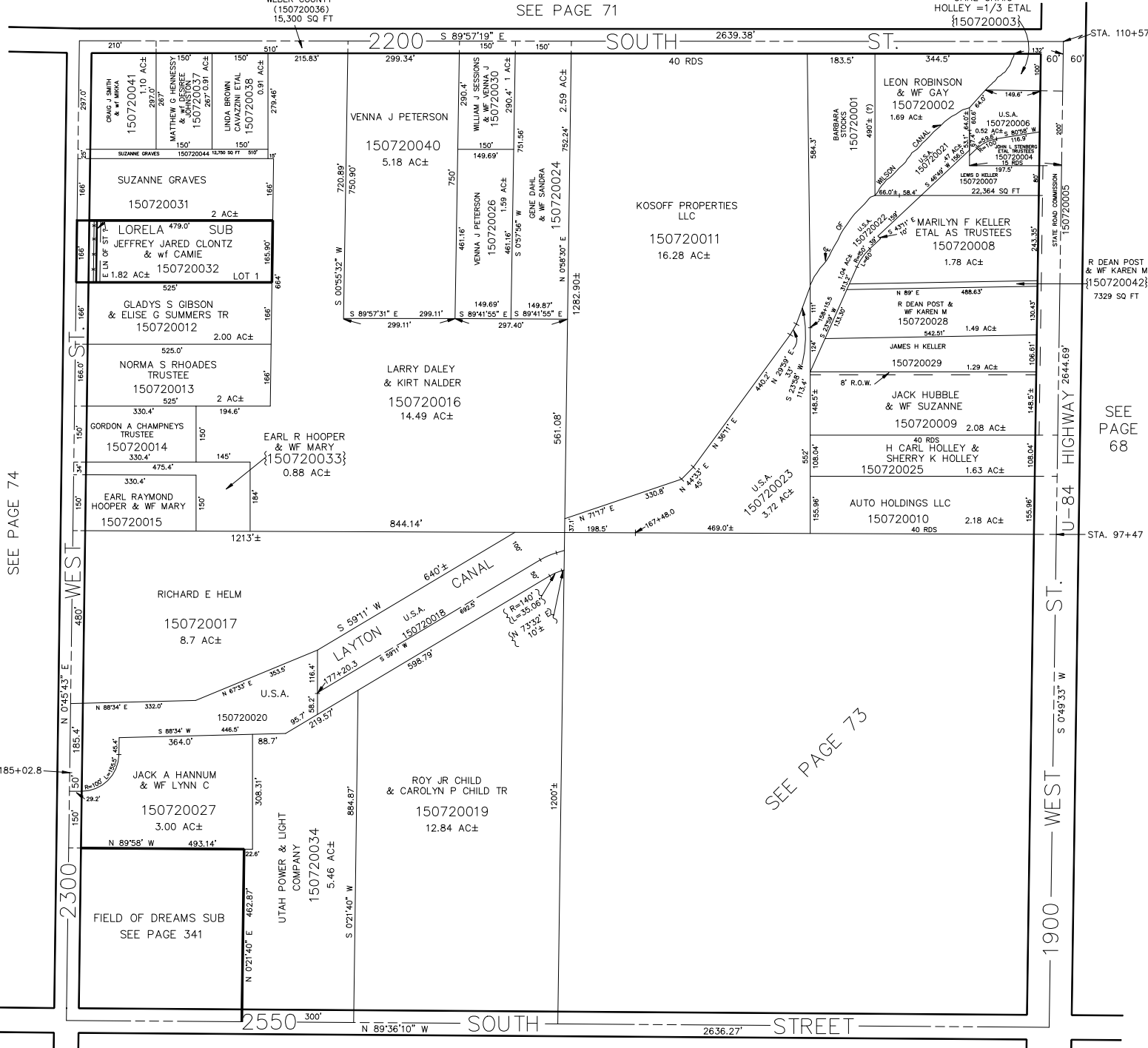
SCALE 1" = 200'

TAXING UNIT: 277

SEE PAGE 71

WEBER COUNTY  
(150720036)  
15,300 SQ FT

CARL CRAIG  
HOLLEY =1/3 ETAL  
(150720003)



SEE PAGE 74

SEE PAGE 68

SEE PAGE 73

SEE PAGE 94

SEE PAGE 95